

TUK-A-WAY® SERIES

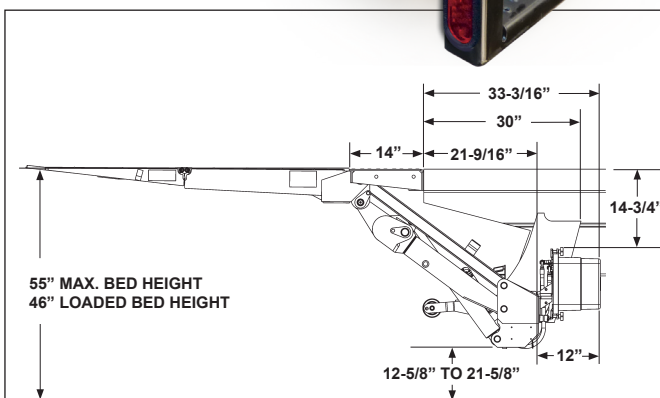
The GPT-25, GPT-3, GPT-4, GPT-5 Series



GPT SPECIFICATIONS

The GPT series Tuk-A-Way is the #1 selling liftgate series in the world. The newly updated GPT now offers a bolt-on extension plate and steps (with and w/o lights). The large aluminum platform makes it ideal for almost every application including large carts or pallets. The Level Ride design keeps the driver and cargo safe and the lightweight aluminum finish will look great for years to come.

- Rust proof extruded all aluminum 60"D X 80"W lightweight platform provides ample size without the increased weight of older steel designs
- Recessed hinge design provides flat loading surface over entire width of platform
- Bolt-on extension plate and steps
- Potted toggle switch
- Power down and power tilt
- Trombetta solenoid (150-amp, intermittent-duty, moveable contact, rotating disc-type) for superior performance



GPT Lift Dimensions and Mounting Requirements

MODEL CAPACITY	OVERALL WEIGHT	PLATFORM SIZE	BED HEIGHT
GPT-25 (2500 Lbs.)	(1105 LBS.)	60" X 80"	46" Laden
GPT-3 (3000 Lbs.)	(1115 LBS.)		55" Unladen
GPT-4 (4000 Lbs.)	(1130 LBS.)		46" Laden
GPT-5 (5000 Lbs.)	(1140 LBS.)		55" Unladen



TUK-A-WAY® SERIES

The GPT-25, GPT-3, GPT-4, GPT-5 Series

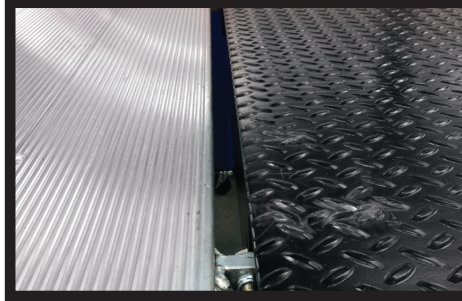
MAXON®

Standard Equipment

- SmartSpace™
- Bolt-on Step & Extension Plate (note: can also be welded to the body)
- Extruded All Aluminum Platform and Steps
- Power Down & Power Tilt
- Hydraulic Lock Valve
- Recessed Platform Hinge
- Greasable Pins with Zerk Fittings on All Major Pivot Points
- 24" Long Rubber Dock Bumper

Optional Features

- 2-Step Bolt-On HD Dock Bumpers w/ Light Cut Outs
- Flexible Cable Steps
- Automatic Cart Stops (Single or Dual)
- MAXGRIP™
- Cab Cut Off Switch
- Hand Held Remote
- Low Voltage Thermal Switch (LVTS)
- Max On-Lock (Dock Lock Receiver-by Special Order Request)
- FMVSS and CMVSS Certified Underride
- Galvanized Finish



SmartSpace™

Maxon has added a gap (SmartSpace™) between the liftgate and the extension plate. This feature makes liftgates more efficient and safe to use.



Bolt-On Extension Plate and Steps

Bolting on the extension plate and steps, versus the current practice of welding, has two crucial advantages: it overcomes corrosion issues - induced by welding and repainting and it simplifies installation.



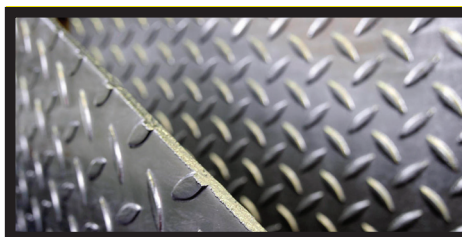
Aluminum Platform MAXGRIP™ OPTIONAL

Lightweight aluminum platform design with recessed hinges provides a flat loading surface over entire width of platform. The platform features dual assist torsion springs that minimize the opening and closing force. Optional available with knurled surface (MAXGRIP™).



Max On-Lock

By special order request (SOR) all GPTs can be ordered with the Max On-Lock kit which makes them compatible with the most common vehicle dock restraint systems.



GALVANIZED Finish

Galvanization is the process by which zinc is coated over corrosive (easily rusted) metals. The process of galvanizing, not only protects from corrosion of various 'soft metals' but also adds strength to the original, uncoated metal.

Distributed by:

M-188-0114



Maxon Lift Corp. 11921 Slauon Ave., Santa Fe Springs, CA 90670
800.227.4116 Fax 888.771.7713, www.maxonlift.com