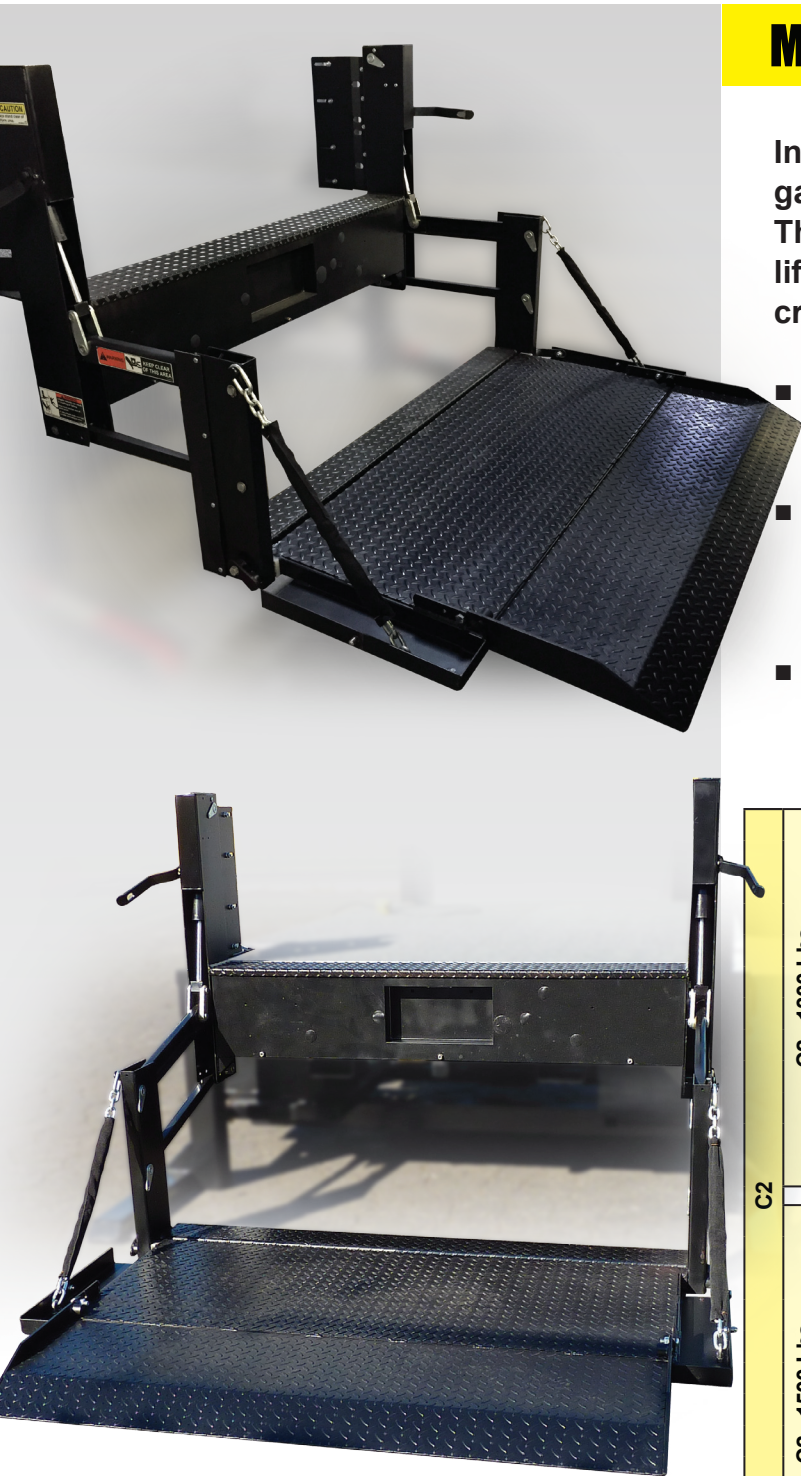


Me2 C2 SERIES

Pickup



Me2 C2 SPECIFICATIONS

Introducing the all-new Me2 C2—just like the lift-gates you know, but at significantly reduced cost. The Me2 C2 (C2 = 2 lifting cylinders) provides direct lifting with level ride and ramp options that increase loadable platform depth.

- Me2 C2 liftgates are built with high performance and low maintenance in mind
- Oversized, fully enclosed pump and motor assembly helps ensure increased life and less downtime
- Maintenance-free bearings reduce the need for service

	Model No.	Load Area	Ramp	Travel	Weight	
C2	Steel Platform					
	C2 - 1300 Lbs	C2-60-1342 TP27	55" X 27"	4"	28" to 42"	460 lbs
		C2-60-1342 TP38	55" X 38"	4"		510 lbs
		C2-60-1342 TP42	55" X 42"	7"		535 lbs
	Aluminum Platform					
	C2 - 1300 Lbs	C2-60-1342 EA27	55" X 27"	4"	28" to 42"	435 lbs
		C2-60-1342 EA38	55" X 38"	6"		465 lbs
		C2-60-1342 EA48	55" X 48"	6"		495 lbs
	Grip Strut Platform					
		C2-60-1342 GS27	55" X 27"	4"	28" to 42"	460 lbs
	Bar Grate Platform					
		C2-60-1342 BG27	55" X 27"	4"	28" to 42"	460 lbs
	C2	Steel Platform				
C2 - 1500 Lbs		C2-60-1542 TP27	55" X 27"	4"	28" to 42"	460 lbs
		C2-60-1542 TP38	55" X 38"	4"		510 lbs
		C2-60-1542 TP42	55" X 42"	7"		535 lbs
Aluminum Platform						
C2 - 1500 Lbs		C2-60-1542 EA27	55" X 27"	4"	28" to 42"	435lbs
		C2-60-1542 EA38	55" X 38"	6"		465 lbs
		C2-60-1542 EA48	55" X 48"	6"		495 lbs
Grip Strut Platform						
		C2-60-1542 GS27	55" X 27"	4"	28" to 42"	460 lbs
Bar Grate Platform						
		C2-60-1542 BG27	55" X 27"	4"	28" to 42"	460 lbs



Me2 C2 SERIES

Pickup

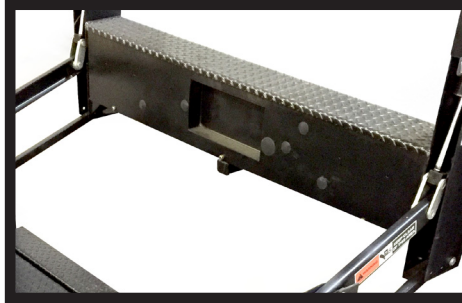
MAXON®

Me2 C2 standard features

- Dual hydraulic lifting cylinders
- Maintenance-free components
- Protected / recessed main control with time-out feature
- Steel or aluminum platforms
- Fully-enclosed hydraulic system

Optional features

- Light Kits
- Remote Pendant Control
- Rubber Platform Protection Bumpers
- Tire Rack Kit



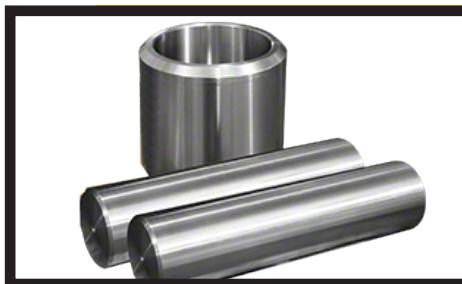
Enclosed Pump & Motor Assembly

The Me2 C2 pump and motor assembly is fully enclosed and shielded from the elements.



Main Control with Time-Out Feature

A timed toggle control prevents unauthorized use. It automatically deactivates 90 seconds after operation.



Maintenance Free Pins & Bushings

Maintenance free pins and bushings allow for years of maintenance free service.



Power Cable with Full Length Ground

The dedicated ground cable helps to get the maximum lifespan out of the vehicles battery.

Distributed by:

M-211-0516



Maxon Lift Corp. 11921 Slauson Ave., Santa Fe Springs, CA 90670
800.227.4116 Fax 888.771.7713, www.maxonlift.com